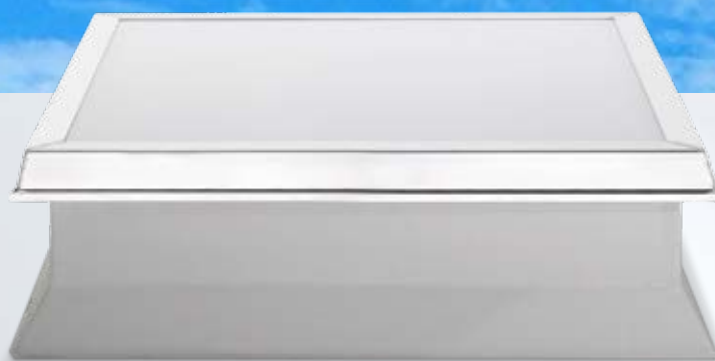


# Wemaflap M



The price-conscious quality solution for industry and commerce

# Thermosheet – the smart solution for industry and commerce



**Thermosheet multi-wall sheet**  
with discreet striped design.

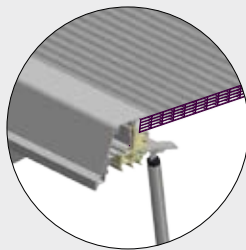
## The Thermosheet multi-wall sheet

The Thermosheet multi-wall sheet is a flat core element of the Wemaflap skylight element specifically designed for industry and commercial applications. The integrated hollow chambers achieve outstanding thermal performance and sound insulation values that offer numerous benefits for the user and roofer.

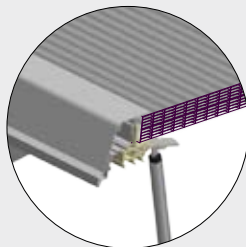
The Thermosheet multi-wall sheet is available in thicknesses of 10, 16, 26 and 32 mm, depending on the physical requirements.

The Wemaflap is the price-conscious quality solution for industrial and commercial buildings and is especially flexible, as it can be custom-made in all desired sizes (up to 2.0 m in width and up to 6.0 m in length).

Thermosheet multi-wall sheet  
16mm

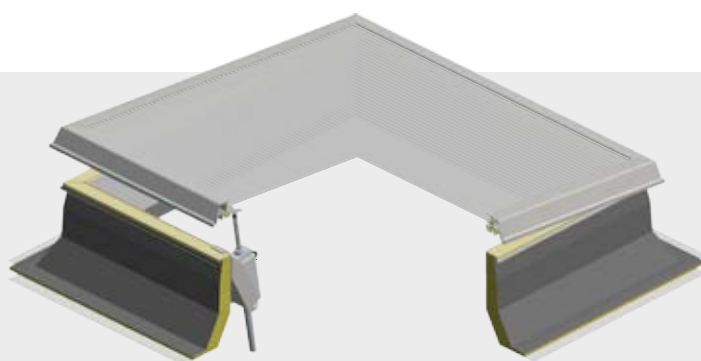
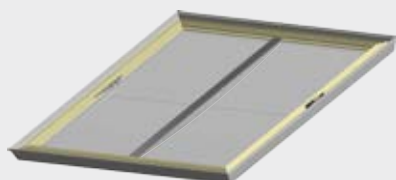


Thermosheet multi-wall sheet  
32mm





# Wemaflap Thermosheet



## Quality in large quantities

### Standard clamp

This creates a curvature of 3° which ensures sufficient snow load stability and therefore optimum rain water drainage and less contamination.



Industrial and commercial halls place particular demands on skylight systems: Meeting fire protection and safety requirements, daily ventilation, lighting with daylight, excellent thermal performance and last but not least the use in large quantities require the best possible relationship between technical design and price.

The Wemaflap Thermosheet was developed especially for these requirements as a quality product and combines the excellent physical properties of the Thermosheet multi-wall sheet with the Wemalux M design principle.

This offers many advantages which benefit the user and roofer during assembly: more variants, low price, safety, environmentally friendly materials and low installation costs.

## Wemaflap Thermosheet clear

	U-Value U <sub>g</sub> [W/m <sup>2</sup> K]	Light transmis- sion [%]	G-Value [%]	Noise reduction [dB]
Wemaflap TS 10	2.5	68	74	19
Wemaflap TS 16	1.8	62	65	21
Wemaflap TS 26	1.2	42	48	23
Wemaflap TS 32	1.1	38	42	24

## Wemaflap Thermosheet opal

	U-Value U <sub>g</sub> [W/m <sup>2</sup> K]	Light transmis- sion [%]	G-Value [%]	Noise reduction [dB]
Wemaflap TS 10	2.5	50	57	19
Wemaflap TS 16	1.8	54	48	21
Wemaflap TS 26	1.2	37	36	23
Wemaflap TS 32	1.1	33	31	24



# Wemalux Thermosheet

## Product properties

### First, the most important one

- Excellent value for money
- U-Value from 0,9 W/m<sup>2</sup>K acc. EN 1873
- Noise reduction of 26 dB acc. EN717
- Optional: Fall-through protection with LifeNet or LifeGuard
- Optional: Resistance against flying sparks and radiant heat according to EN 13501-5
- Optional for Wemalux Thermosheet:
  - Hail protection with polycarbonate roof cladding
  - Heat Block solar control coatings

### Areas of application

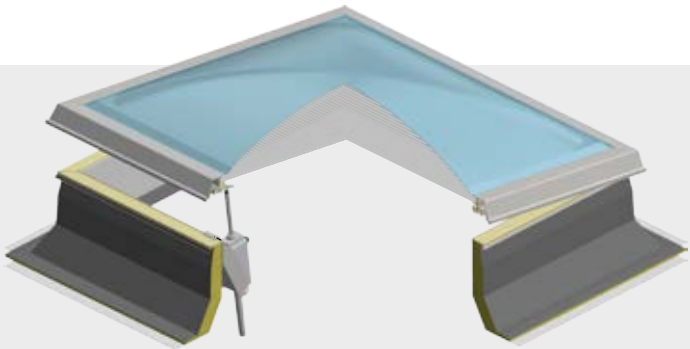
- Flexible use: rigid, ventable and can be used as a smoke and heat exhaust ventilation device (NSHEV)
- Daily ventilation possible by means of a manual, electric or pneumatic drive
- All requirements according to DIN 18232, VdS 2159 and TRVB s125 are met for use as a smoke and heat exhaust ventilation device with an electric or pneumatic opening mechanism
- Suitable for flat roofs and flat inclined roofs with a maximum roof gradient of 25°

### Formats and design details

- Wemaflap Thermosheet: up to 2.0 m in width and 6.0 m in length
- Wemalux Thermosheet: up to 2.0 m in width and 3.0 m in length
- Free of drilled holes and therefore completely dust- and water-tight
- Edge-protected by the aluminium frame, corners welded. Safety in the event of a fire, material does not drip onto the roof surface
- Optional: Colouring possible

### Assembly

- Quick and simple assembly (built completely ex works)
- Every rigid domelight can subsequently be retrofitted with an opening mechanism



## The extension of the Wemaflap

The outstanding properties of the Wemaflap Thermosheet can be enhanced for special applications by means of an additional acrylic dome. This is recommended, for example, if even greater thermal insulation properties, improved rain water drainage and even higher snow load stability are required. The additional curved dome not only improves the physical properties but also has a self-cleaning effect which permanently maintains the optimum lighting with daylight without being cleaned. The Wemalux Thermosheet ideally combines the properties of the flat and price-conscious Wemaflap with those of the curved Wemalux M dome.

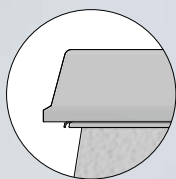
## Wemalux Thermosheet

	U-Value U <sub>g</sub> [W/m <sup>2</sup> K]	Noise reduction [dB]
Wemalux TS 10	1.7	21
Wemalux TS 16	1.4	22
Wemalux TS 26	1.0	24
Wemalux TS 32	0.9	29



extra**Quality**  
made in Austria

## An unbeatable construction principle for daylight, daily ventilation and smoke ventilation (NSHEV)



### Aluminium frame

The structural load-bearing aluminium frame increases the service life of the domelight, offers edge protection during transportation, assembly and roof cladding integration and also prevents fire from spreading on the roof.



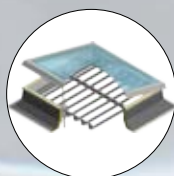
### Three-lip seal

The three-lip seal offers maximum sealing in all weather conditions, while simultaneously preventing the formation of condensate in typical indoor climate conditions (in accordance with ÖN-EN 15251).



### Upstand with special contour

The special interior contour of the Wemalux upstand has an **incident light and air exchange surface** which is **10 % larger** than conventional products.



### Fall-through protection

Eberspächer offers fall-through protection for all ceiling openings up to 6.0 m in width, certified according to EN 1873 and pursuant to ÖNORM B 3417 and ÖNORM EN 10204.

Acustico

Arcolicht

Flatlux

Prismolux

R/R8 type

Tentolux

Toplicht

**Wemaflap**

Wemalux

*Eberspächer stands for the very best in daylight technology. With our decades of experience, significant technical expertise and state-of-the-art production systems, we develop high-tech solutions that deliver a lasting upgrade of working and living spaces. And we invest a great deal of time and energy into continuously improving our product range. We are therefore regularly setting new standards in modern daylight technology.*

### Eberspächer Tageslichttechnik GmbH

Obere Hauptstraße 55-59

2451 Au am Leithaberge

Phone +43 (0)2168 8271-0

Fax +43 (0)2168 8271-17

[eberspaecher@tageslichttechnik.at](mailto:eberspaecher@tageslichttechnik.at)

[www.tageslichttechnik.at](http://www.tageslichttechnik.at)